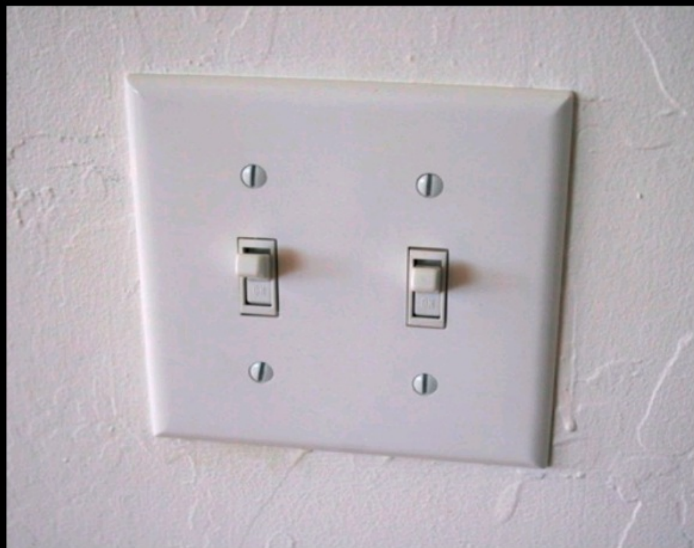
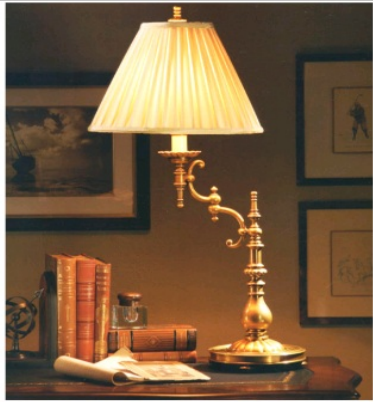


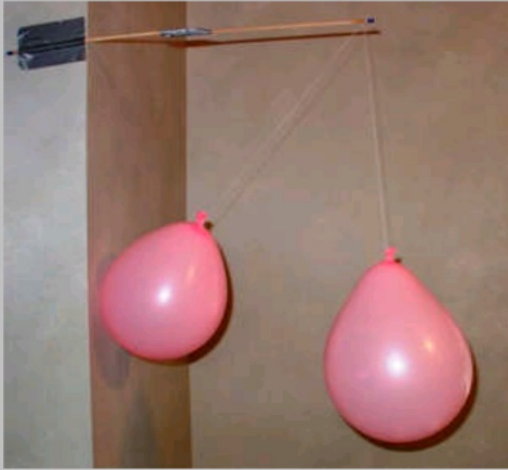
# Electric Current

**Focus Question:** What are the parts of an electric circuit?



# Electricity in Your House





## Static Electricity:

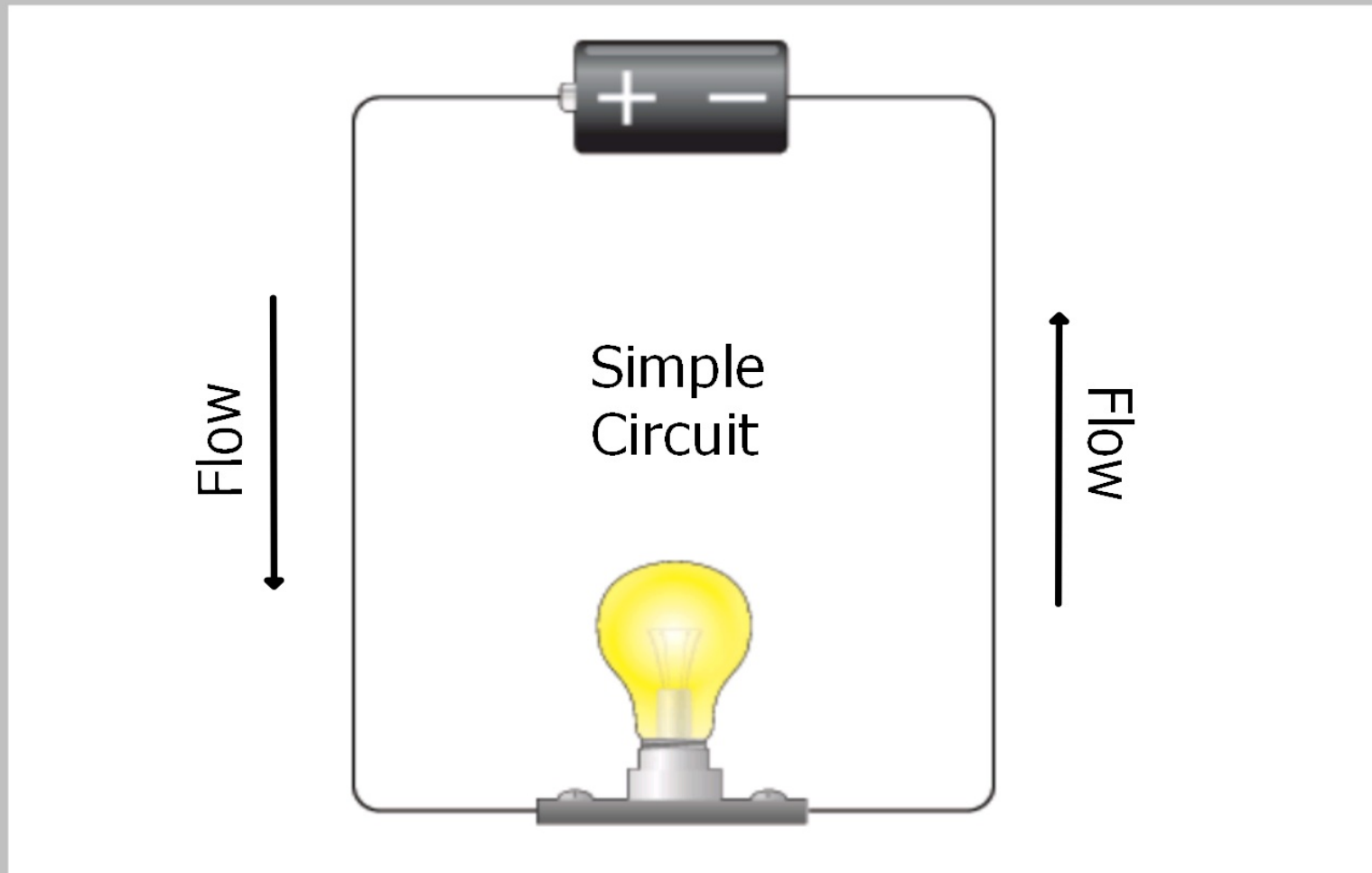
- You can have some fun with it...but it's hard to control.
- The charges flow anywhere they want to, so they can't be used to power electrical devices.



Electric Current: continuous flow of negative charges.



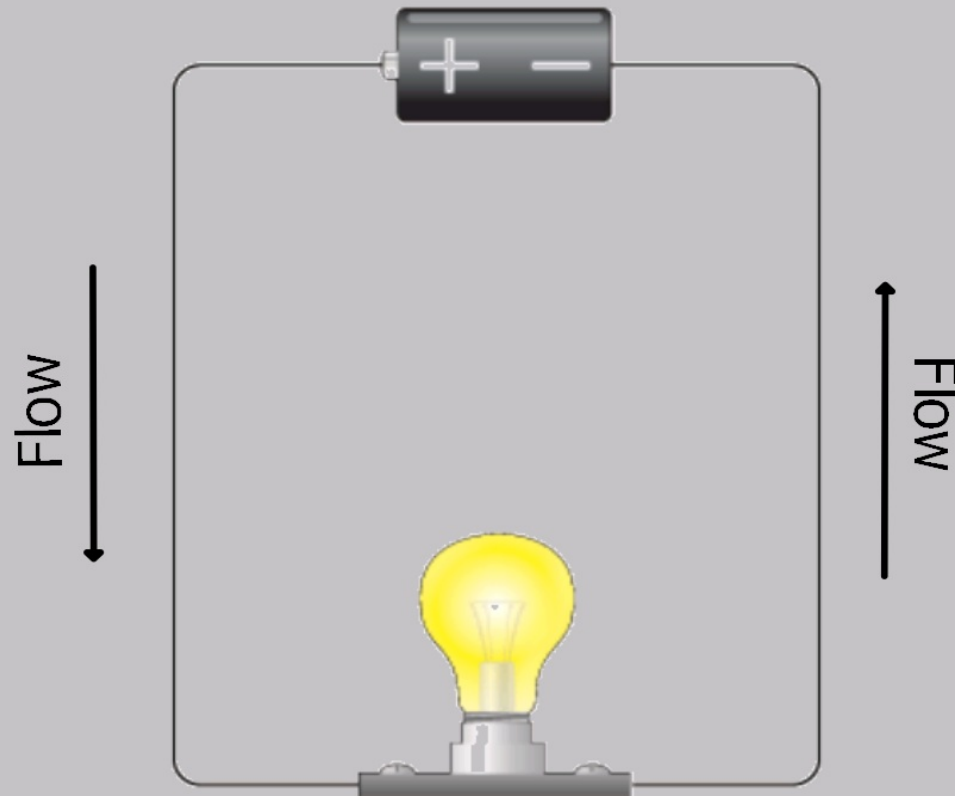
Electric Circuit: a path along which negative charges can flow.

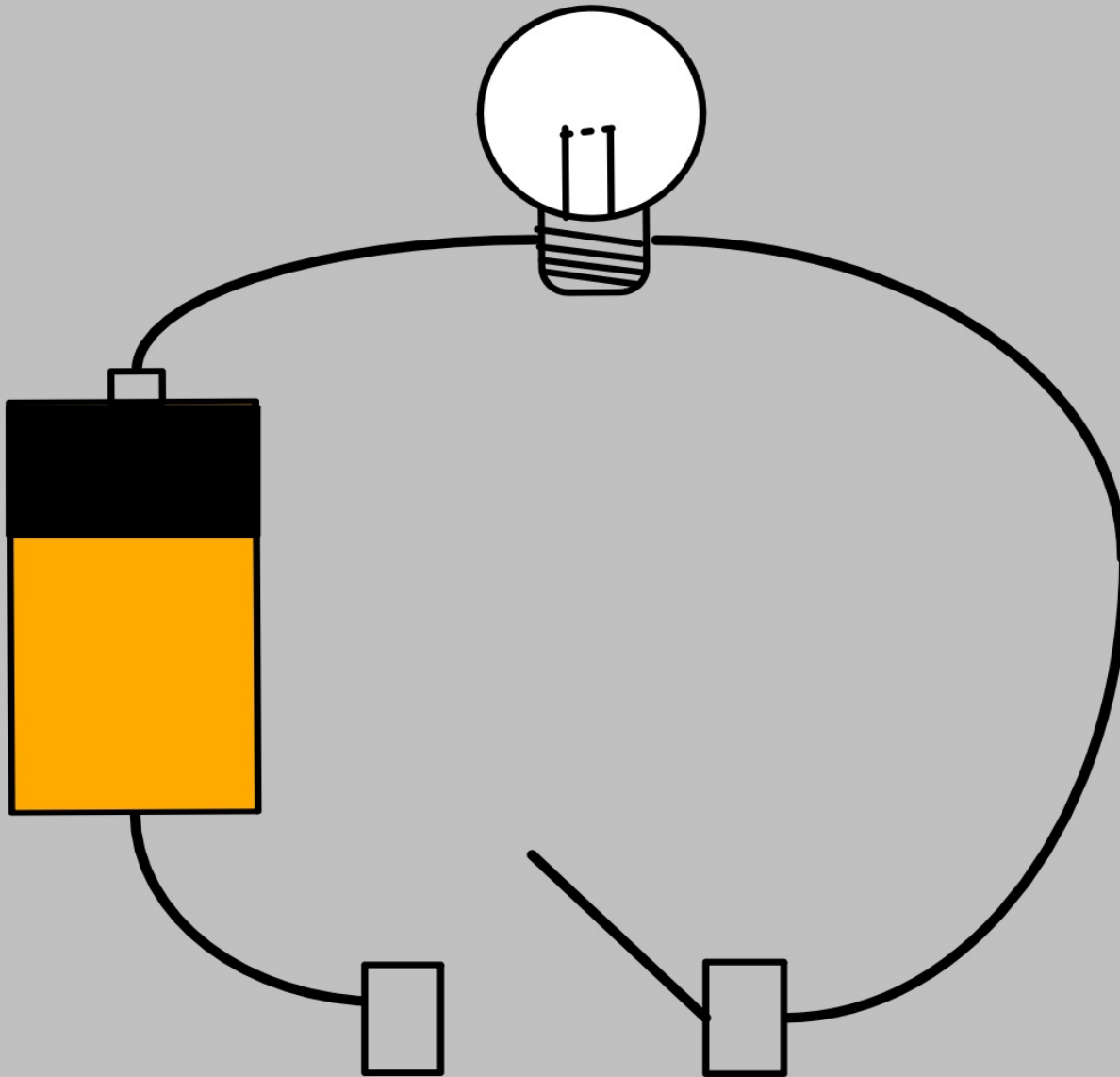




## Closed Circuit:

- There is no break in the flow of negative charges.
- The power is **on**!



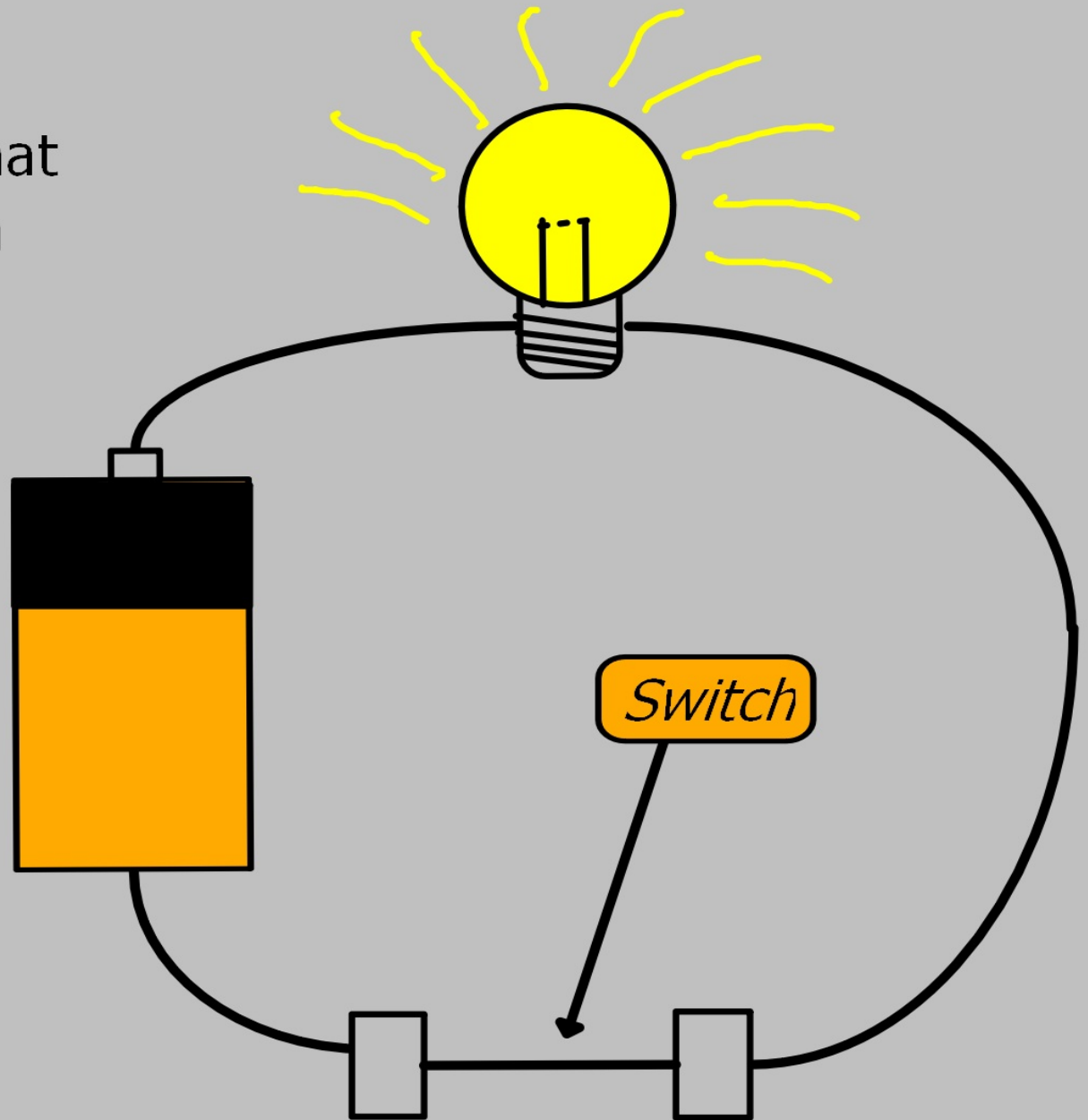


## Open Circuit:

- There is a break in the flow of negative charges.
- Power is **off**!



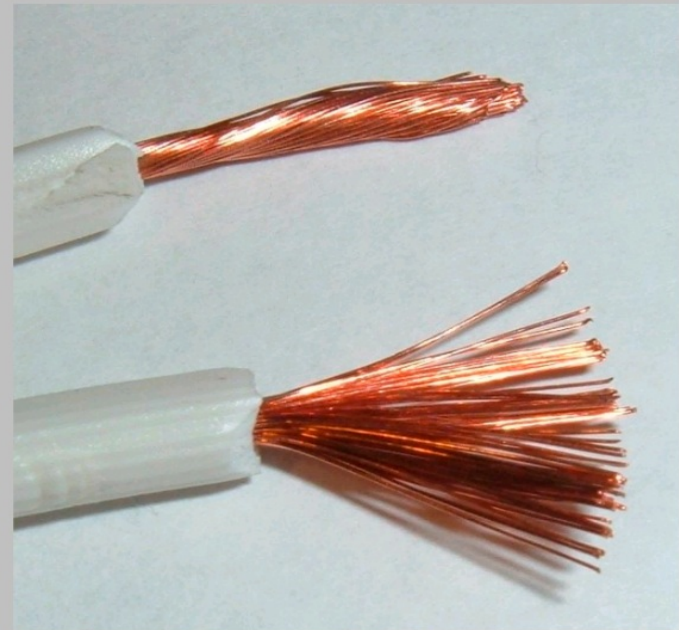
Switch: a device that opens and closes a circuit





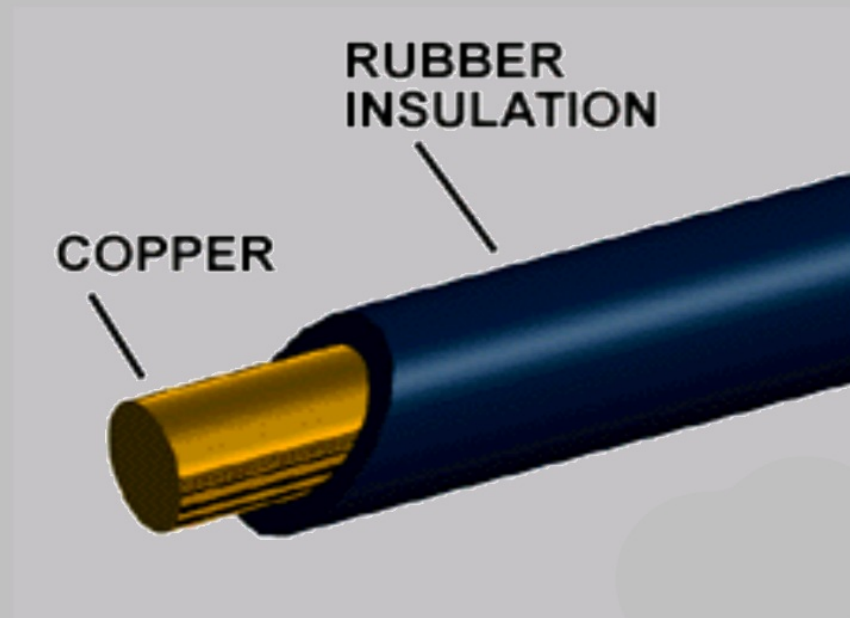
**Conductors** : Things that let electricity pass through easily.

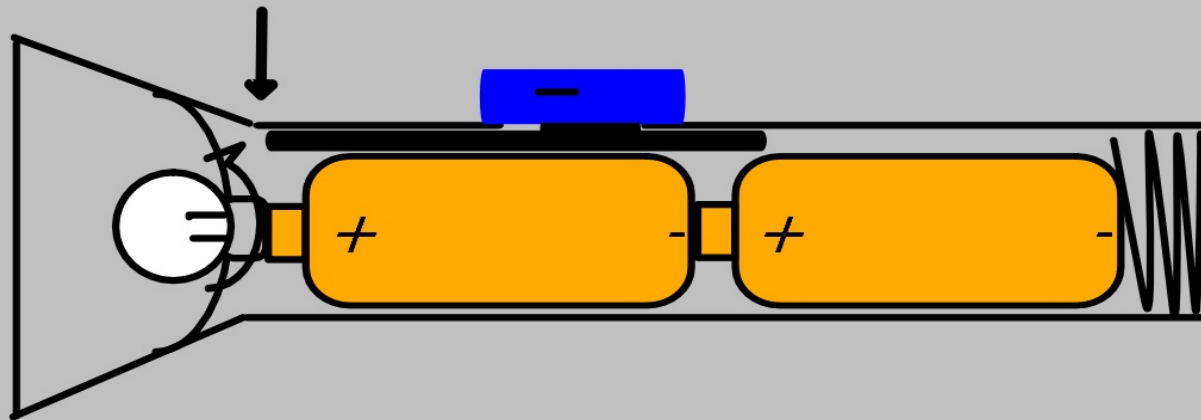
- Most kinds of metals are good conductors.
- Copper is the most commonly used metal for conducting electricity



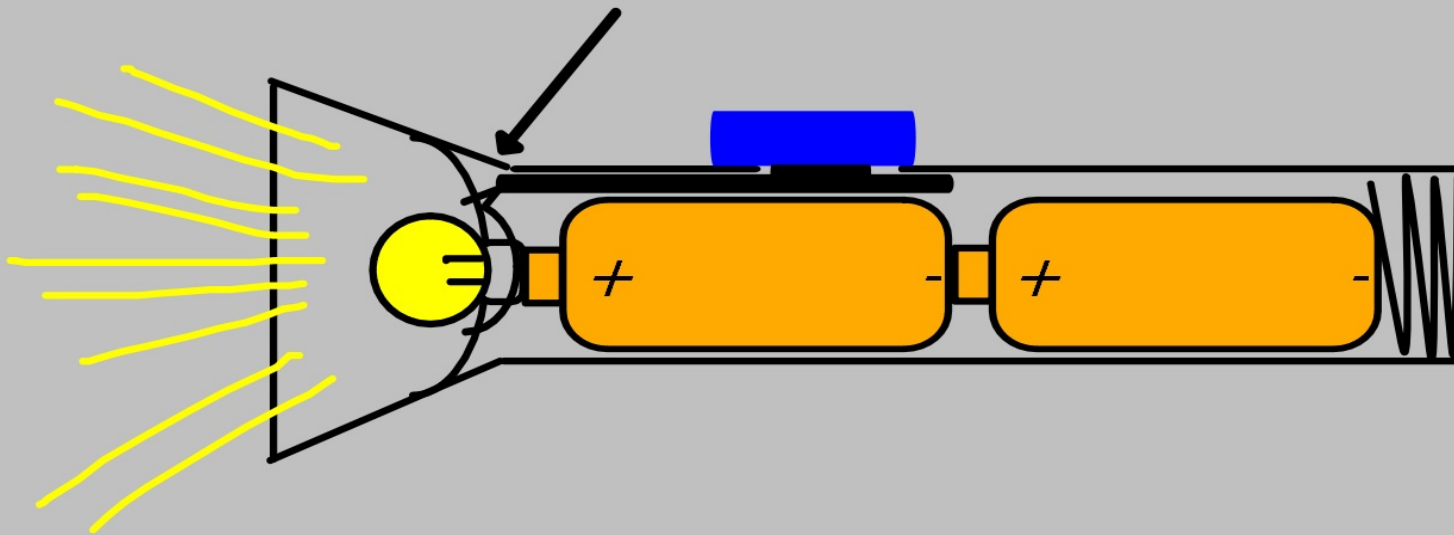
**Insulators:** Things that don't let electricity flow through them easily.

- Plastic, rubber, wood, paper, cloth, and ceramics (glass, clay) are good insulators.





Off



On

Sliding the blue button forward closes the circuit.

