

# LAND and WATER

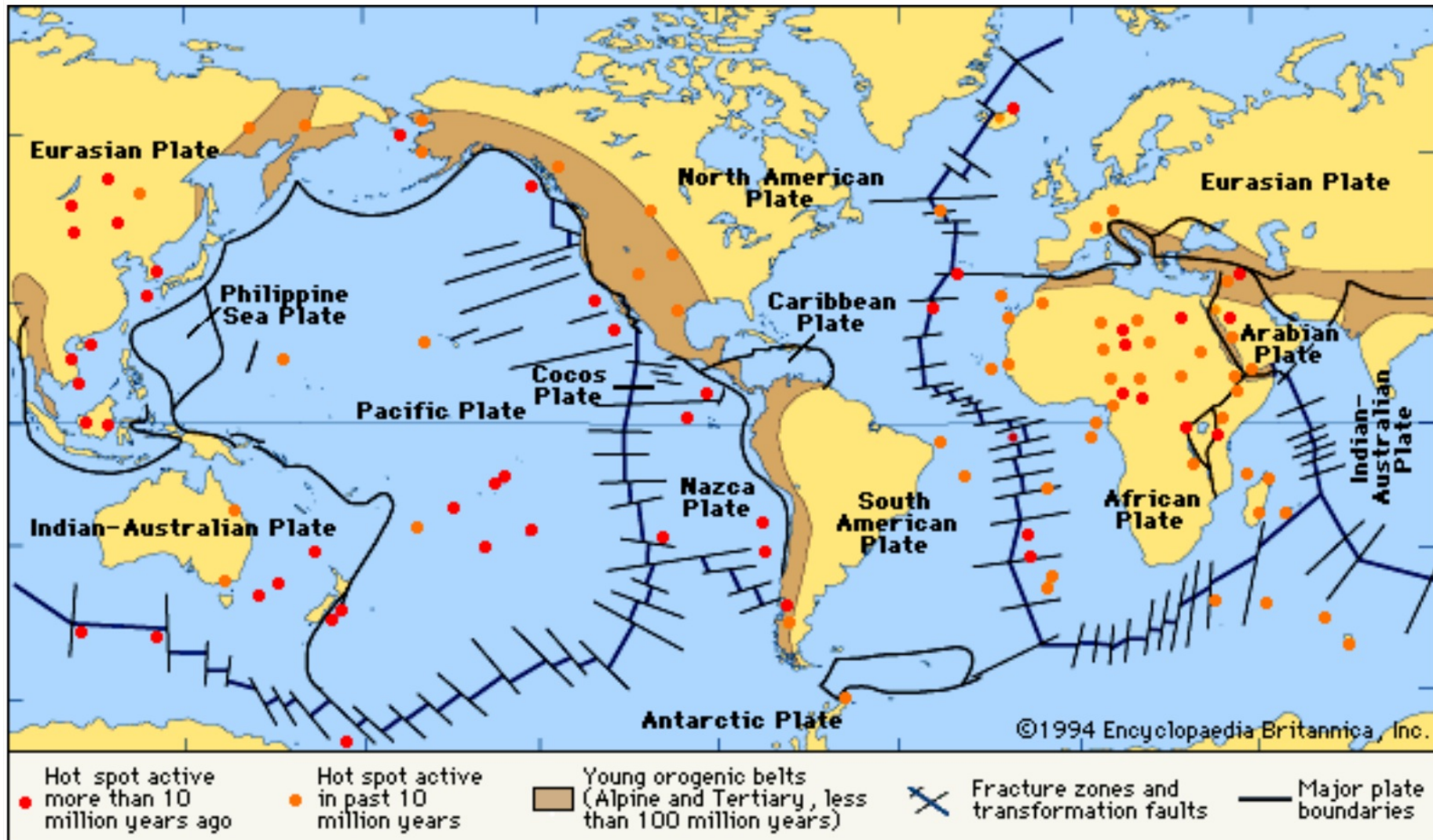
## Lesson 1.2



# LAND



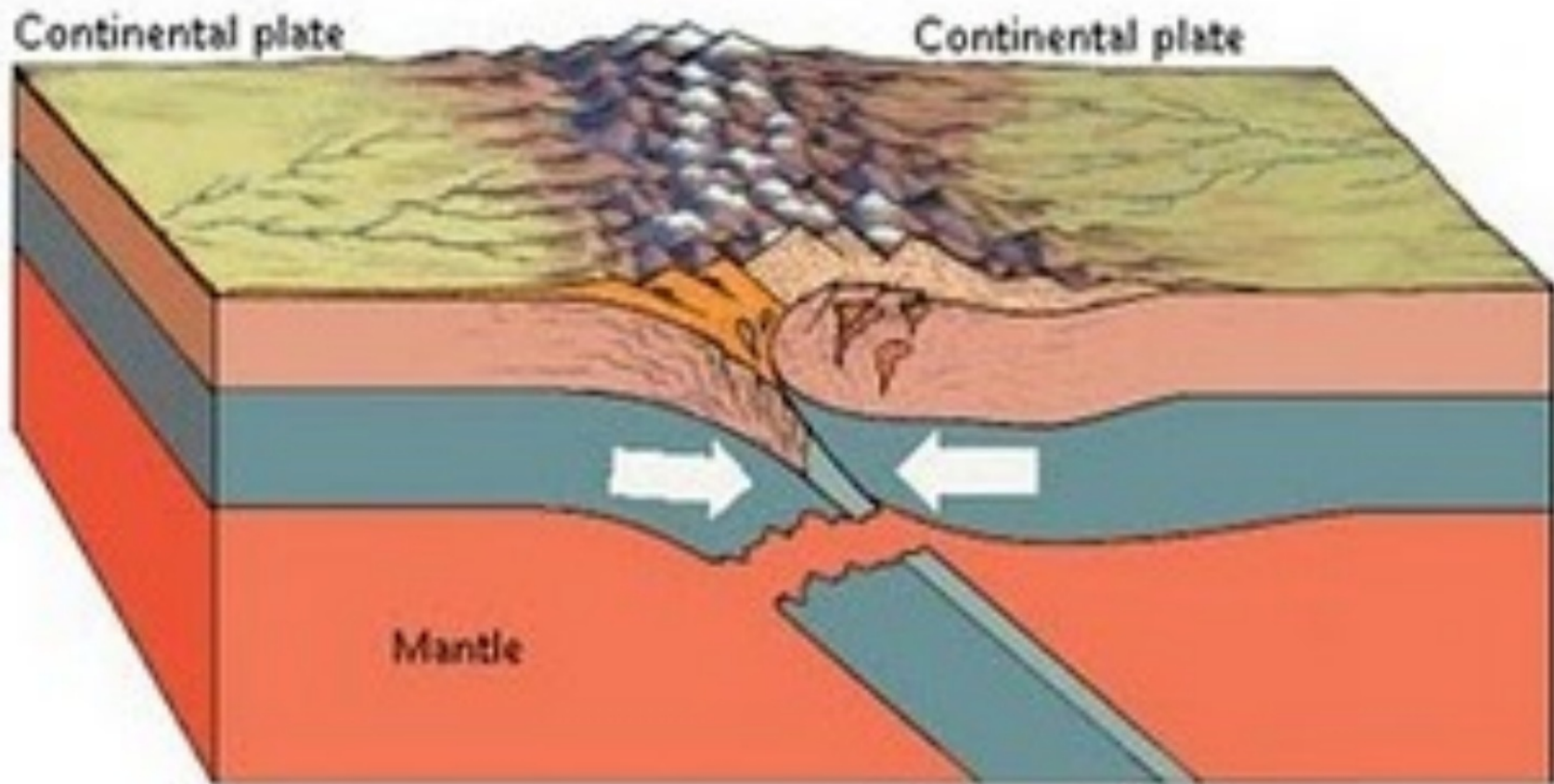
# Plate Tectonics



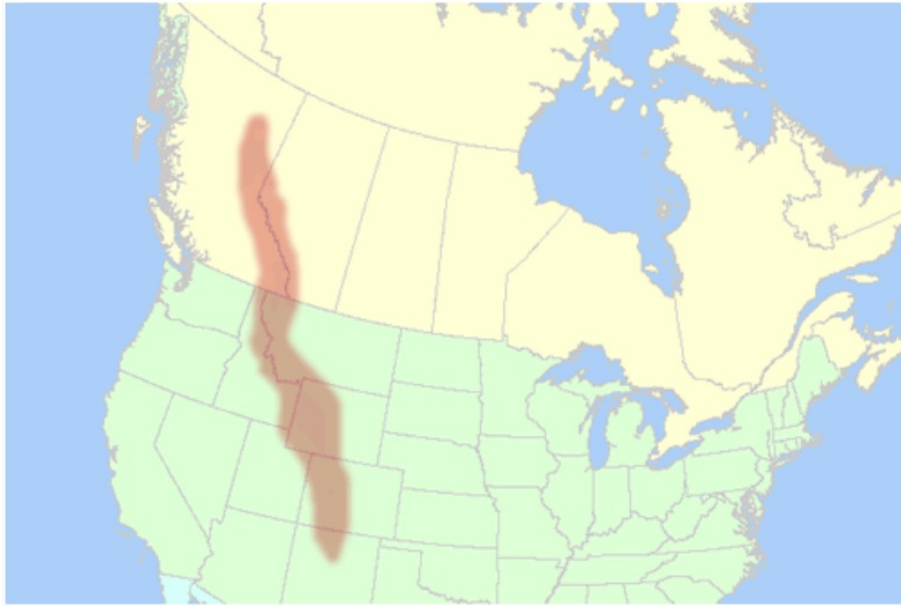


## **The San Andreas Fault in California**

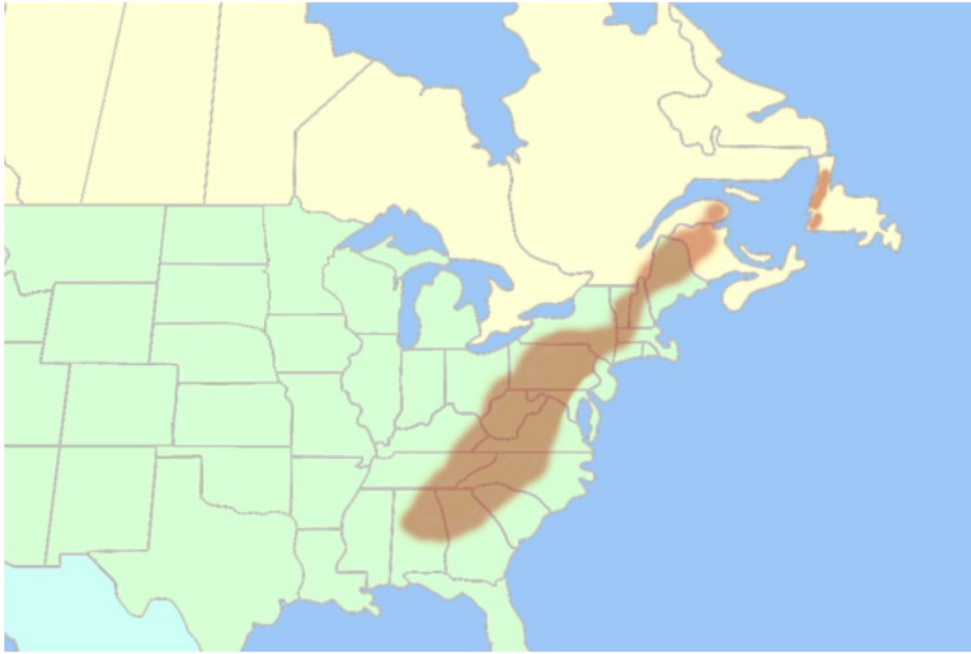
**Tectonic plates** move very slowly,  
creating mountains.



# Rocky Mountains



# Appalachian Mountains



# Mt. Washington, NH



Mike Theiss





Moving **tectonic plates** also cause earthquakes.



**San Francisco, CA**

# The Forces of Erosion



**WATER**

**Ice**

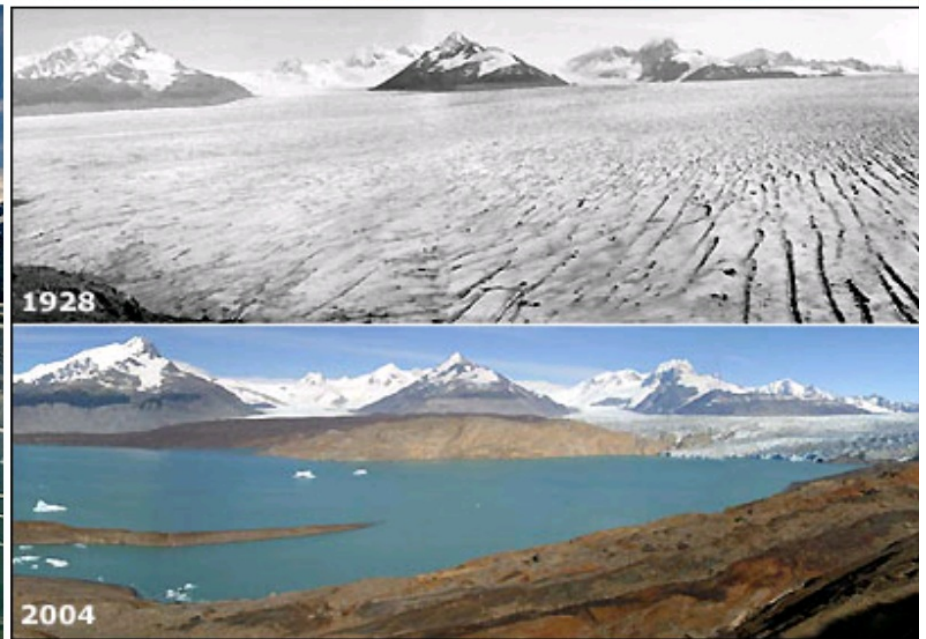
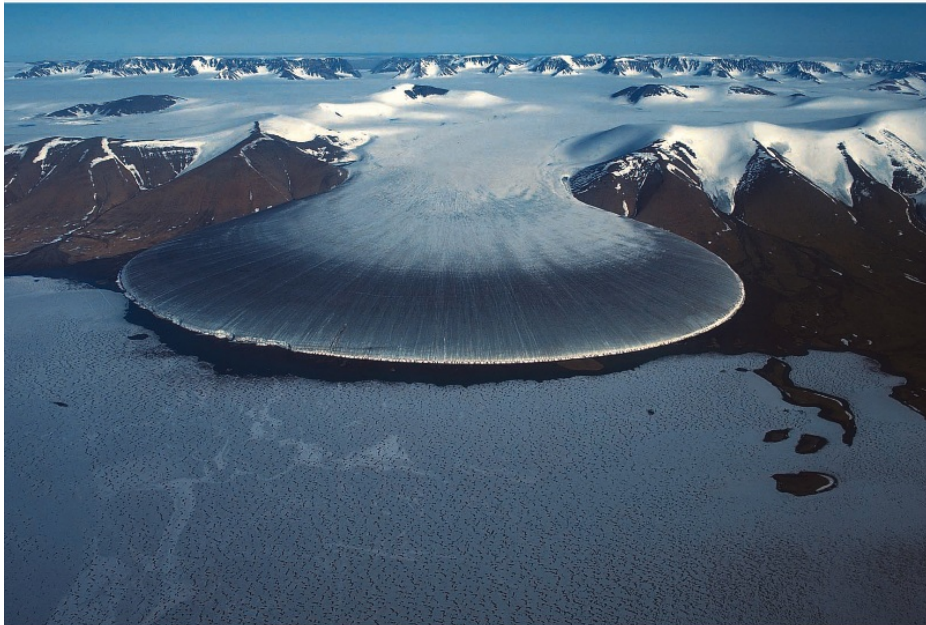


**Wind**

# Glaciers



**A glacier  
is a huge  
mass of  
slowly  
moving ice**





# Yosemite Valley

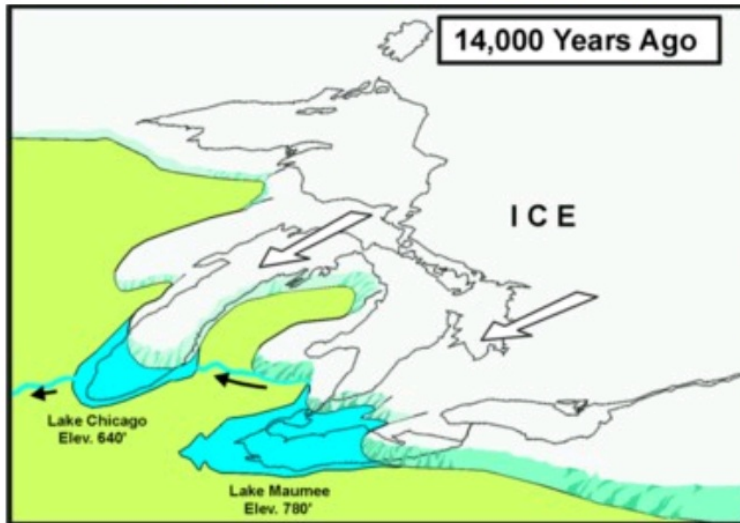
# Bodies of Water



**Basin: an area with a low center surrounded by higher land.**



# Great Lakes



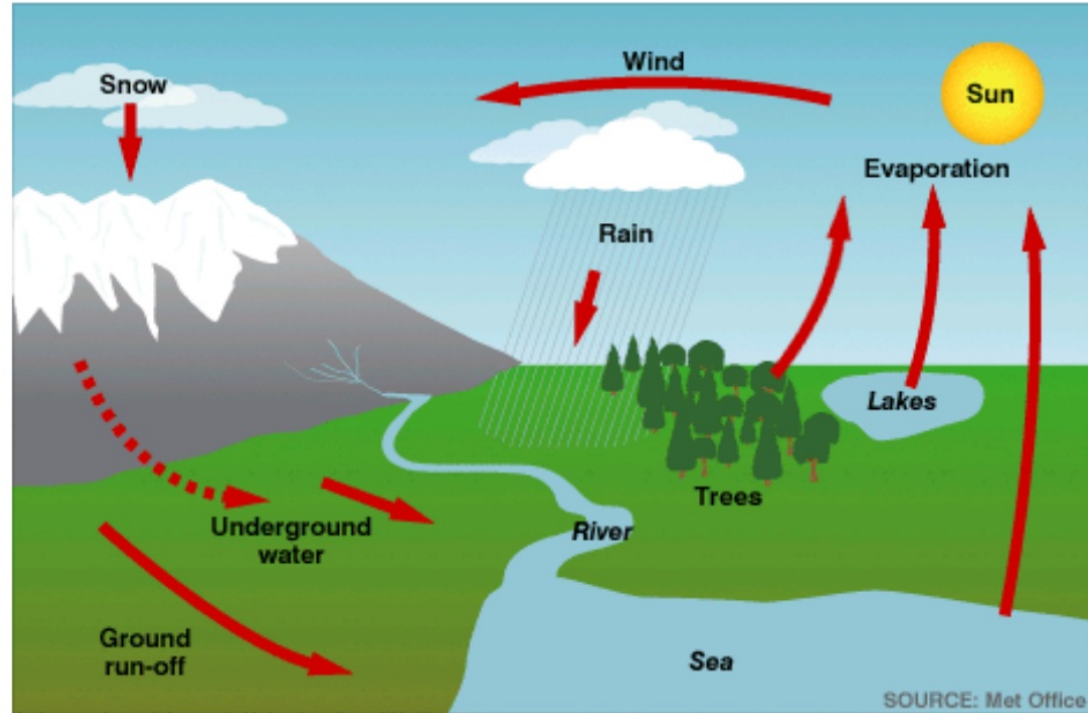




# The Great Salt Lake, Utah



WATER CYCLE

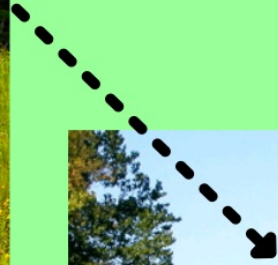


# Rivers

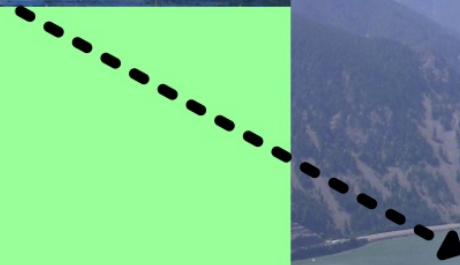
- Water flows downhill from high areas to low areas
- Small streams grow into larger rivers, and empty into the ocean.



Creek



Stream



River



**Start: Lake Itasca,  
Minnesota**

**2,320 miles**

**Finish: New Orleans,  
Louisiana**





